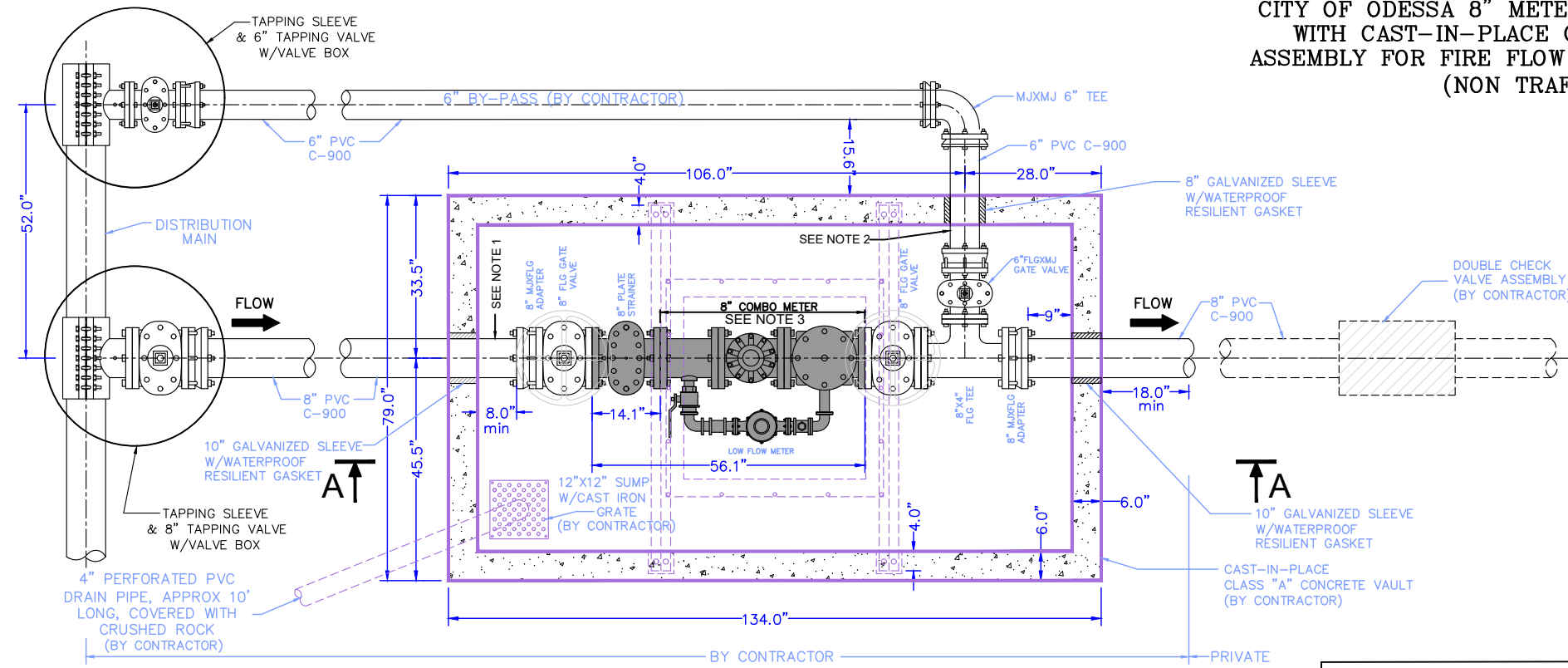
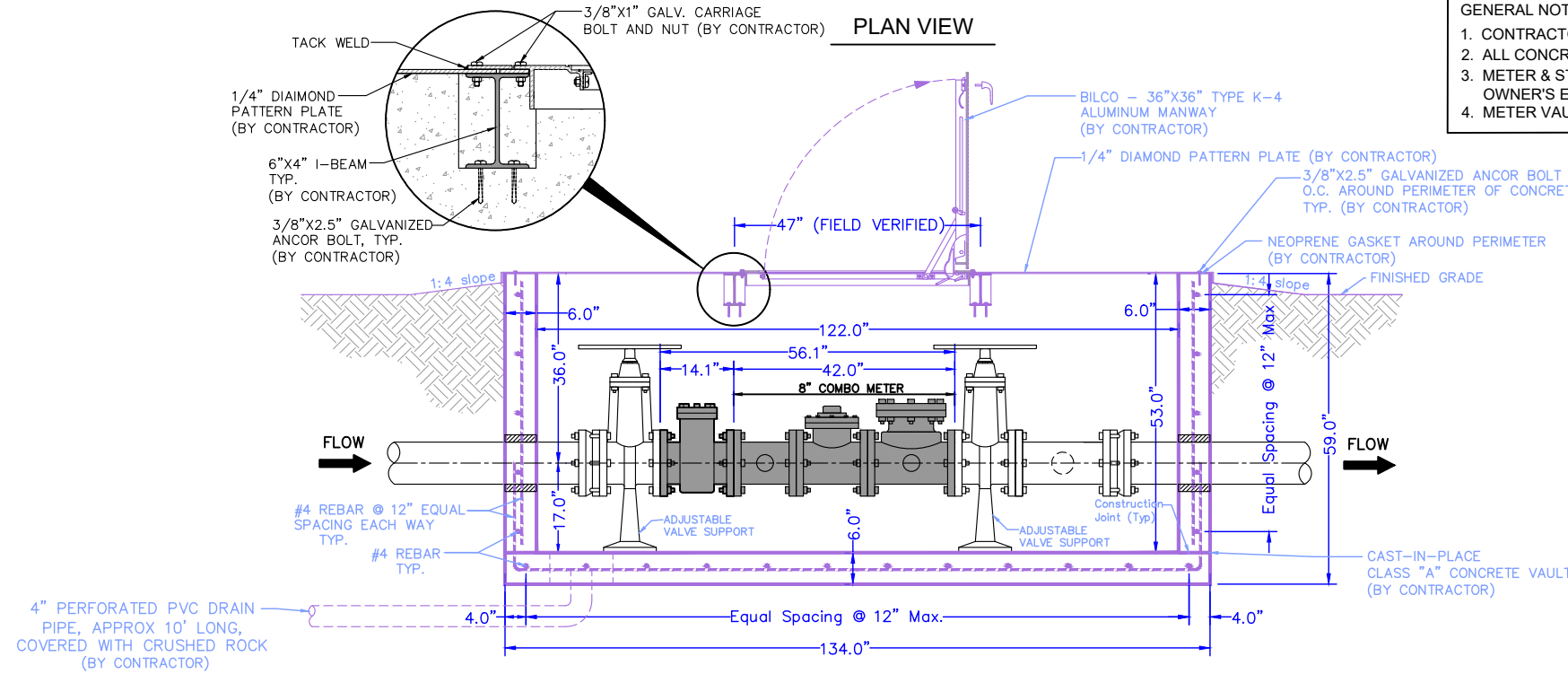


**CITY OF ODESSA 8" METER AND 6" BY-PASS
 WITH CAST-IN-PLACE CONCRETE VAULT
 ASSEMBLY FOR FIRE FLOW AND DOMESTIC USE
 (NON TRAFFIC)**



PLAN VIEW

- GENERAL NOTES:**
1. CONTRACTOR TO STUB-IN MINIMUM OF 18" OF 8" PVC C 900
 2. ALL CONCRETE TO BE 3600 psi.
 3. METER & STRAINER ASSEMBLY TO BE SUPPLIED AND INSTALLED BY THE CITY AT OWNER'S EXPENSE
 4. METER VAULT & PIPING TO BE INSTALLED BY AN APPROVED UTILITY CONTRACTOR



**SECTION A-A
 REINFORCEMENT AND COVER**