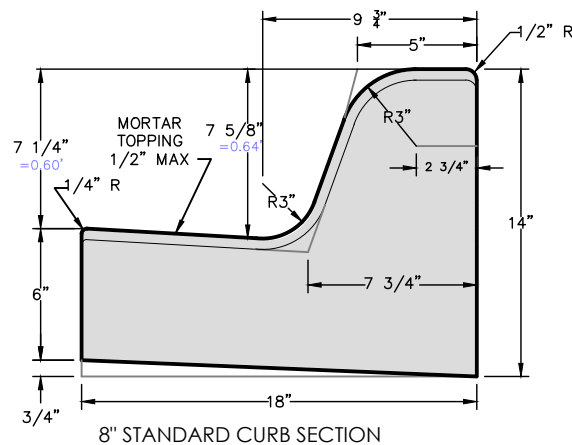
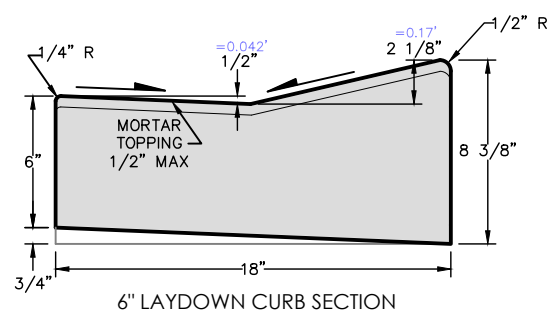


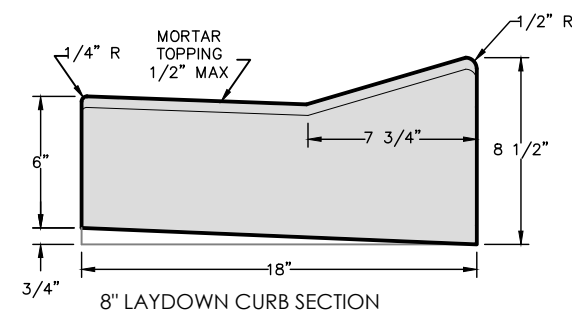
6" STANDARD CURB SECTION



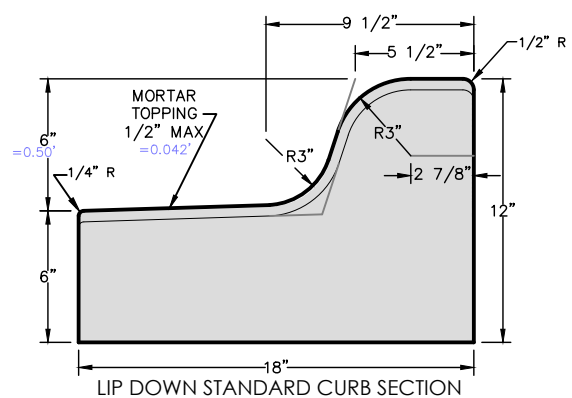
8" STANDARD CURB SECTION



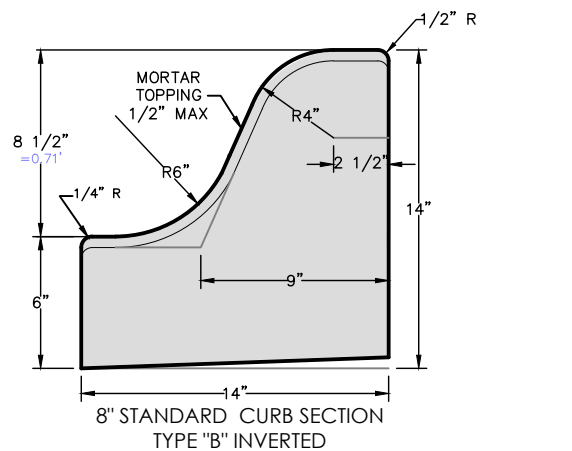
6" LAYDOWN CURB SECTION



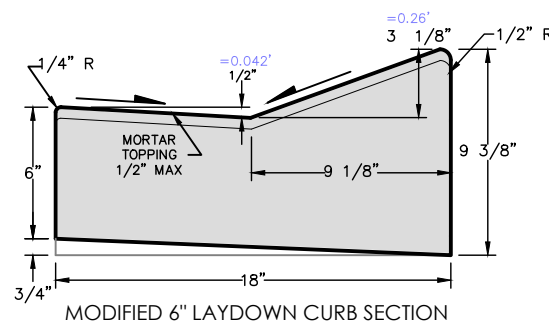
8" LAYDOWN CURB SECTION



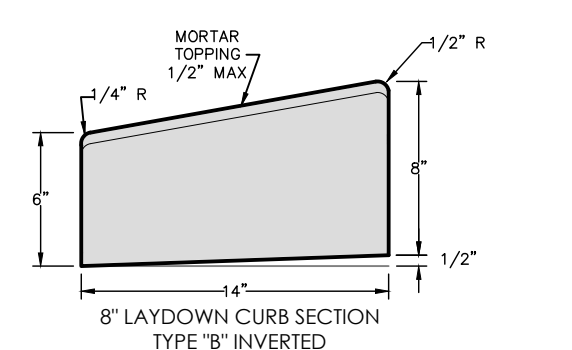
LIP DOWN STANDARD CURB SECTION



8" STANDARD CURB SECTION TYPE "B" INVERTED



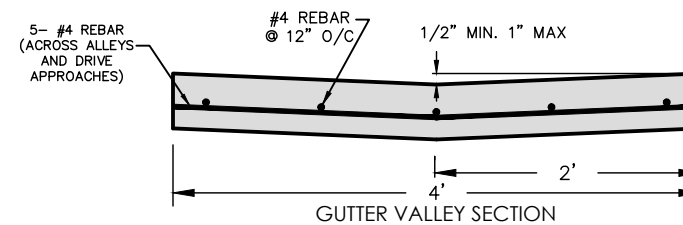
MODIFIED 6" LAYDOWN CURB SECTION



8" LAYDOWN CURB SECTION TYPE "B" INVERTED

CURB & GUTTER NOTES

1. ALL CONCRETE SHALL BE CLASS "A" CONFORMING TO THE REQUIREMENTS OF ITEM 400. THE CURB & GUTTER SHALL BE TOPPED WITH RICH MORTAR AND FINISHED AS A MONOLITHIC UNIT.
2. 1/2" PREMOLDED EXPANSION JOINTS SHALL BE PLACED AT INTERVALS NOT GREATER THAN 40 FEET, DUMMY JOINTS SHALL BE CUT AT 10' INTERVALS.
3. ALL EXPOSED CURB SURFACES SHALL HAVE A TROWELLED FINISH FOLLOWED BY A LIGHT BRUSHING AND ALL VALLEY GUTTER AND SPANDREL SURFACES SHALL BE GIVEN THE SAME TYPE OF FINISH.
4. ALL CURB AND GUTTER SHALL BE BACKFILLED AND THE R.O.W. SHALL BE CLEANED AND NEATLY FINISHED.
5. CURB SHALL BE SAWED WHERE REMOVED OTHER THAN AT A JOINT OR WHERE NEEDED TO PREVENT BREAKING OF EXISTING CURB, PRICE TO BE INCLUDED IN THE BID ITEM FOR REMOVED CURB AND GUTTER.



GUTTER VALLEY SECTION